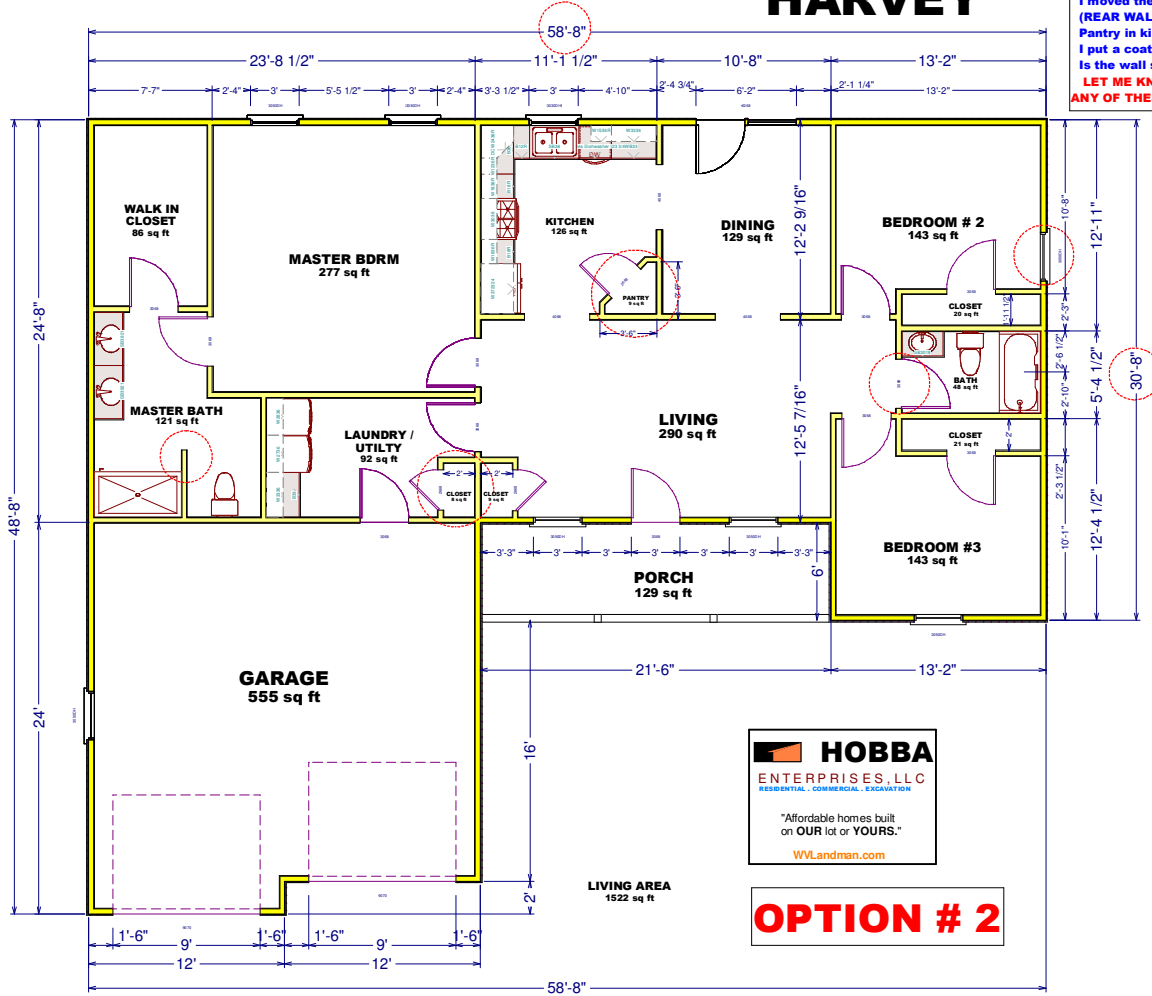


HARVEY



DAVE CHECK OUT THE RED CIRCLES

- Window placement in bedroom 2
- Door size in bath
- I moved the walls out 8" (other side of pin) (REAR WALL & SIDE WALL)
- Pantry in kitchen
- I put a coat closet in laundry
- Is the wall stick out so far in Master bath

LET ME KNOW IF YOU WANT TO CHANGE ANY OF THESE PLACE OR OPTIONS

HOBBA
 ENTERPRISES, LLC
 RESIDENTIAL · COMMERCIAL · EXCAVATION

"Affordable homes built on OUR lot or YOURS."
WVLandman.com

OPTION # 2